

Corporate IntellMatcher

The “Next-Generation” friend matchmaker

For companies and events of all sizes

By SNJ Enterprises
1801 South Parrott Ave #206E
Okeechobee, FL 34974
(863) 467-8967
WWW.SNJENT.COM

Family owned and operated

IMPORTANT DISCLAIMER

All information provided is intended for entertainment purposes only and is not to be used as a substitute for intelligent thinking. We are not responsible for anything as a result of these result sheets.

Safety, Security & Privacy

SNJ Enterprises takes your safety, security and privacy seriously. Especially the privacy of the information provided by participants. The information provided by you and your participants will never be given or sold to any other party for any reason whatsoever. When your event has finished, all electronically stored participant and event information will be deleted.

General contact information:

Phone: (863) 467-8967

Sales: sales@snjent.com

Support: support@snjent.com

Billing: billing@snjent.com

Webmaster: webmaster@snjent.com

Table of Contents

Disclaimer & Contact Information	2
Introduction, What is Corporate IntellMatcher?	5
Why is IntellMatcher better?.....	6
Features at a glance	7
Cost.....	8
Getting Started.....	9
What the Result Sheets contain.....	10
Sample Result Sheet.....	11-12
Sample Question Summary.....	13
Sample Employee Summary	14
Sample Corporate Summary	15
Corporate Questions.....	17-21
Final considerations & contact information.....	23

This page left blank intentionally

Corporate IntellMatcher

The “Next-Generation” friend matchmaker

If you’ve never sponsored a friend matchmaker event before, you’re about to discover one of the most exciting events your group will ever have. Finally, an event in which the people love to participate *and* help to raise spirits at the same time! It’s the best way to help people *get-to-know* each other.

If you *have* run a friend matchmaker event before, then you already know how exciting it is. But I bet you didn’t realize that it could be *more exciting* than ever before. Corporate Intell-Matcher will make it happen.

“Hey, there are other events we could run, and even a few other friend matchmaker companies out there. Why should I go with the IntellMatcher system?”



Simple. IntellMatcher takes friend matchmaking to the next level. Also, no other company offers you more than Intell-Matcher does for one low fixed price.

“Statistics show that employees who share common interests create a better work environment”

Corporate IntellMatcher is a new, sophisticated type of computer matchmaker system for friendship. It is based on our flagship product for *date & friend matchmakers* used as school fundraisers.

With IntellMatcher, participants answer a variety of multiple-choice questions online (which you have the option of creating) such as, *“What is your favorite type of music?”*, *“What is your favorite type of movie?”* and *“How much time to you spend on your computer at home?”*.

These answers are then processed using a new and sophisticated intelligent matching system. This intelligent matching technology was developed exclusively by SNJ Enterprises to produce the most accurate, “true-to-life” matching possible.

These results are delivered back to the participants online. This result “sheet” shows up to 20 specialized matches for that person, such as “Top-five friends in your office”, “Top-five friends in your area”, “Top-five friends in your region” and “Top-five friends in the entire firm”. These *office, area, region, firm* designations can be customized (or removed) to

Hold On To Your Money!

match your corporate structure. For example, you could segment it as “Department”, “Office” & “State” or “State”, “County” and “City” for non-corporate type events.



IntellMatcher is a great value because you only pay a small setup fee up front.

- ◆ One price per participant for the complete results sheet.
- ◆ You only pay for the participants that actually participate.
- ◆ There is NEVER any extra charges for ANY of the customizations that are available.

WHY IS INTELLMATCHER BETTER?

- ◆ We offer the best prices
- ◆ We have the most detailed result sheets
- ◆ Incredible flexibility makes it suitable for all corporate or event structures
- ◆ Everything is done online, no paperwork.
- ◆ And most importantly...IntellMatcher Technology

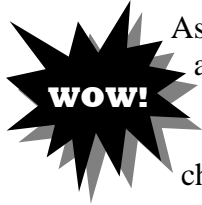
IntellMatcher technology uses intelligent weighted comparisons to produce much more accurate results than competitors exact match scoring. With competing products, an exact match (answer/answer) receives a point towards your compatibility with that person. With IntellMatcher, a perfect match still receives a full point. However, a "close" or "somewhat compatible" answer receives a percentage of a point. This can really make a difference!

For example, using the sample question: "How many books did you read last month?"

The possible answers are: "None", "1", "2", "3", and "4 or more".

If you were to answer "4" and your "potential" match were to answer "3", you would not be considered compatible when "matched" using a competitor's system. This can produce inaccurate overall compatibility if you matched most of the other questions the same. In this case, you are both readers, but you just happen to read slightly more than your potential match.

This is where IntellMatcher really makes a difference. IntellMatcher recognizes that if you read 4 books, you are more compatible with someone who reads 3, rather than with someone who reads none. So instead of "totally" disqualifying a person who only reads 3, their "score" is "weighted" more towards your favor than someone who answered 2 or 1 (who would be "weighted" even less). Lastly, someone who answered "none", would not even be considered at all. This method provides much more accurate results.



As an added bonus, the result sheet contains various birthday facts and trivia such as famous people born on your month/day, astrological sign information, number of participants in your event with the same birth month/day and much more. All at no extra charge.



FEATURES AT A GLANCE

The most detailed result sheets available - The result sheets produced from the Intelli-Matcher system provide more information than any other system. A detailed result sheet is custom produced for each participant. See the Samples section that are included in the back of this publication.

No "fixed" questionnaires - You are not required to use a "fixed" questionnaire. Simply choose 40 questions from over 125 that are available. If you want, you can even come up with your own questions, change some of the existing ones, or even change the answers on existing questions.

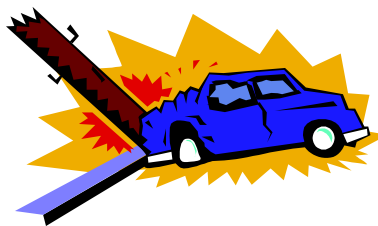
Minimal up front costs - You are only required to pay a small set up fee to get started. Then, after the answer sheets have been processed, you only pay us for the result sheets produced for people that actually participated.

No minimum sales - You are not required to meet any minimum sales quota. You pay the same low price per result sheet for 1,000 participants, 100 participants or even only 10 participants.



One simple low price - No complicated "per-feature" charges. You get ALL of the features shown on the detailed two-page result sheet for one low price.

No paperwork, nothing to ship - Everything is done electronically with Corporate Intelli-Matcher. You do not need to ship anything to us, no paper forms to fill out and nothing to print yourselves.



Profanity filtering - Although unlikely in a corporate environment, this unique feature checks the names entered on the employee answer sheets against known profanity. This helps to reduce the possibility of someone ruining your event by entering a vulgar name, which of course would then show up on other people's lists.

Gender-specific matching - If you have concerns about *opposite-sex* matches, you have the option to force only same sex matches. This assures you that nobody can misinterpret the results as anything related to *dating*.

Fast turn-around times - IntellMatcher can produce your result sheets in as little as 48 hours or less (in most cases).

Online management - Your project manager will have online access to all of your company's event information such as current submissions, passwords and custom messages.

Event Participation Summary Report - With every event, you will receive an Event Participation Summary Report. This report shows interesting facts such as, the number of participants, by sex, that participated and the oldest/youngest participants. Even the number of perfect 100% matches in your event and much, much more. This is great information to include in the company or event newsletter. See the samples section later in this publication for an example.

Questionnaire summary report - With every event, you are also given a Questionnaire Summary Report. This very interesting report shows a list of all of the questions and answers on your questionnaire along with the number of participants who chose each answer. This is great information to include in the company or event newsletter. See the samples section later in this publication for an example.

Participant Answer Summary Report - You also receive, a participant answer summary for every person that participates! This personalized summary shows all of the questions on the questionnaire and the participant's answer. It also shows the percentage of compatibility, per question, with their matches in every category. This allows them to see exactly what areas they are most compatible and what areas they are not. This feature is included at no extra charge to you. Look for the samples later in this publication.



COST

Considering all of the information included on the results sheets, the IntellMatcher system has the lowest cost per result sheet available.

What is the cost?

There is a single cost of only \$.75 USD for each person that participates. There are no additional charges for any of the extra features. Everything you see on the sample result sheet is included for the same \$.75 USD. *You do not pay for employees that do not wish to participate.* If you have 1,000 people in your event and only 200 participate, you only pay for those 200 who actually participated.

There is a one-time setup fee for your first event. This fee is determined based on the number of participants and divisions you have. The setup fee for a company or event with 1,000 participants and 4 geographical regions is generally around \$300.00 USD. If you should decide to run the event again in the future (and your corporate or event structure has not changed), this fee is waived for the second and subsequent runs.

HOW DO I GET STARTED?

There are only four basic steps for the Corporate IntellMatcher system.

- ◆ You provide us with your corporate or event structure & choose your questions
- ◆ Participants fill out questionnaires (online)
- ◆ We process the answers
- ◆ Participants view their result sheets (online)

This section will try to go into every last detail of the steps you will need to complete in order to have a successful and exciting office event.

CONTACT US TO PLACE YOUR ORDER

We need to know what your target dates are for beginning the questionnaire-week. We can also assist you with any of the other steps needed to assure a smooth event. You can either call us by phone, send us an e-mail or submit the order request online. We'll need to know several things, such as the number of potential participants in your company or event and the name and contact information of the person who will be the project leader.

START ADVERTISING FOR QUESTIONNAIRE-WEEK

Get everyone excited about the upcoming questionnaire week. Direct them to our web site for information on what the event will be like. Encourage everyone to participate. Remember, the more participants, the more accurate the results will be and the more fun it will be for everyone.

CHOOSE YOUR QUESTIONS

Get together in a group and decide on the 40 questions you want to have on your questionnaire. Remember, you can even change some of the standard questions or make up your own complete new questions. If you do decide to change some of the existing questions or make up some new questions, be sure to contact us. You can build your questionnaire online.

QUESTIONNAIRE-WEEK

SNJ Enterprises will send you a company ID, submissions access control number, results access control number and a management password. We will also send you a link for you to send to all of your participants. Although not required, this link will streamline the login process required to answer the questionnaires and receive results. Participants can always go to www.snjent.com directly without using this link.

PROCESSING

When you are sure everyone has completed their questionnaires, notify a member of the SNJ enterprises sales team. We will then deactivate the questionnaire section online and begin processing your results. The processing will usually be completed within 48 hours.

RESULTS-WEEK

Let everyone know that the results are in. We will send you a link for you to send to all of your employees. This link will streamline the login process required to view their results. Have fun!

WHAT THE RESULTS SHEET INCLUDES

The Corporate IntellMatcher system produces an online result sheet for each participant. A sample of this result sheet is shown on the following two pages. Note that you may or may not have as many divisions in your company or event and therefore these extra sections will not appear on *your* result sheets.

Friend Matches

- ◆ Top five most likely friends in your office (or custom level description)
- ◆ Top five most likely friends in your area (or custom level description)
- ◆ Top five most likely friends in your region (or custom level description)
- ◆ Top five most likely friends in your entire firm (or custom level description)

Fun Birthday Facts

- ◆ Exact day of your birth and significance of that day
- ◆ Exact age in years, days, hours, minutes and seconds.
- ◆ Comparison of how many participants are older or younger than you in your entire organization
- ◆ Comparison of how many participants were born in the same year, month or same day as you.
- ◆ Your birthstone, birth flower and their significances.
- ◆ Other famous people who were born on your same month and day.
- ◆ Your astrological sign and symbol including your element, polarity and quality as well as a list of your most compatible matches.
- ◆ The number of participants in your company or event with your same first name.
- ◆ The number of participants in your company or event with your same last name.
- ◆ The number of possible matches in every category/subdivision.

Custom Company Messages

- ◆ You may have a custom message displayed at the bottom of everyone's result sheet. Your project manager can set this up online.

Company Logo or Graphics

- ◆ You may have your company logo or custom graphics displayed on everyone's result sheet. Contact us for more information and image specifications.

Welcome John Doe!

After thousands of calculations and comparisons, the following list has been made especially for you. The numbers after each name represent that participant's phone number and extension, their office, area & region, their age and your percentage of common interests with them; ranging from a perfect match of 100%, to a perfect dud of 0%.

Did you know - You were born on a Wednesday and Wednesday's child is full of woe?

Did you know - When this report was generated, you were exactly 32.14 years old? To put it another way, you were also 11,730 days old, or 281,546 hours old, or 16,892,784 minutes old or 1,013,567,040 seconds old?

Most Likely Friends In Your Office (Miami)

Employee Name	Title	Email Address	Phone Number	Age	%
Tony Millan	Accountant	Tony.Millan@abc.com	(561) 555-1212	31	76
John Smithers	Manager	John.Smithers@abc.com	(561) 555-1212	45	74
Marie Anglin	Sales	Marie.Anglin@abc.com	(561) 555-1212	25	70
Sally Gray	Marketing	Sally.Gray@abc.com	(561) 555-1212	33	65
Jay Aldrich	Sales	Jay.Aldrich@abc.com	(561) 555-1212	43	55

Did you know - Out of the 1000 total participants in your firm, there are 192 females older than you, 258 males older than you, 301 females younger than you and 248 males younger than you?

Did you know - Out of the 493 *female* participants in your firm, there are 28 born in the same year as you, 78 born in the same month as you, 21 born on the same day as you and 1 born exactly on the same date as you?

Did you know - Out of the 507 *male* participants in your firm, there are 120 born in the same year as you, 12 born in the same month as you, 55 born on the same day as you and 0 born exactly on the same date as you?

Most Likely Friends In Your Area (Florida)

Employee Name	Title	Office	Email Address	Phone Number	Age	%
Jill Sanders	Marketing	Miami	Jill.Sanders@abc.com	(561) 555-1212	33	94
Jack Elliot	CEO	Orlando	Jack.Elliot@abc.com	(561) 555-1212	34	89
Nancy Chaffer	Sales	Orlando	Nancy.Chaffer@abc.com	(561) 555-1212	54	81
Chester Little	Maintenance	Tampa	Chester.Little@abc.com	(561) 555-1212	29	71
James King	Sales	Naples	James.King@abc.com	(561) 555-1212	27	71

Did you know - These other famous people were also born on your same month and day: Bill Evans, Madonna, Kathie Lee Gifford & Frank Gifford?

Did you know - Your birthstone is the Peridot or Sardonyx, and the Peridot or Sardonyx symbolizes Married Happiness? Also, your birth flower is the Gladiolus.

Most Likely Friends In Your Region (SouthEast)

Employee Name	Title	Office	Area	Email Address	Phone Number	Age	%
Sam Long	Supervisor	Naples	Florida	Sam.Long@abc.com	(561) 555-1212	33	89
Amanda Smith	Manager	Atlanta	Georgia	Amanda.Smith@abc.com	(561) 555-1212	33	79
Rose Johnson	Sales	Tampa	Florida	Rose.Johnson@abc.com	(561) 555-1212	38	79
Erin Ames	Sales	Memphis	Tenn	Erin.Ames@abc.com	(561) 555-1212	42	76
Matthew Kapper	Marketing	Atlanta	Georgia	Matthew.Kapper@abc.com	(561) 555-1212	25	75

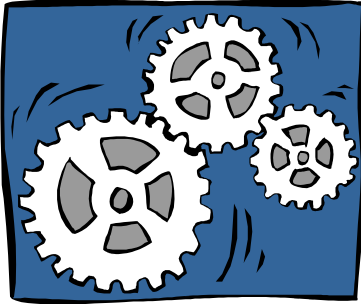
Did you know - Your astrological sign is the Leo and your astrological symbol is the Lion Also, your *element* is Fire, which has the characteristic of Outgoing. Fire people can be inspirational and have a creative vision. They are often assertive, with a zest for life. Your *polarity* is Positive, which has a characteristic of Expressive. Your positive Yin/Yang exerts an outward-looking and extroverted side to your nature. Your *quality* is fixed which has a characteristic of stubbornness. People with fixed qualities tend to be resistant to change, wanting a stable life. They can be the most loyal of the Zodiac qualities.

Most Likely Friends In The Entire Firm

Employee Name	Title	Office	Area	Region	Email Address	Phone Number	Age	%
Donald Ross	Housekeeping	Portland	Oregon	NorthWest	Donald.Ross@abc.com	(561) 555-1212	29	92
Charles Kayne	Maintenance	Miami	Florida	SouthEast	Charles.Kayne@abc.com	(561) 555-1212	41	91
Cathy Gunther	Manager	Pheonix	Arizona	SouthWest	Cathy.Gunther@abc.com	(561) 555-1212	42	88
Joan Eller	Sales	Boston	Mass	NorthEast	Joan.Eller@abc.com	(561) 555-1212	37	85
James King	Sales	Hartford	Conn	NorthEast	James.King@abc.com	(561) 555-1212	30	85

Did you know - Based on your astrological sign of the Leo, you are generally Warm hearted, acting ability, likes to be the center of attention, bubbly, strong willed, lives life to the full, fiery. Also, your most compatible matches are Virgo, Aries, Libra and Leo.

Thank you for participating in the Company "find-a-friend-at-work" event.



QUESTION SUMMARY

Another great feature of Corporate IntellMatcher is the detailed question summary report. This information is great to include in your company or event newsletter. This summary shows all of the questions on your questionnaire and the number of participants, by sex, that chose each answer.

Question & Possible Answers	Male	Female
1. When it comes to religion, I...		
Love to participate regularly	6	5
Have to go because of my spouse	5	4
Believe, but rarely go	7	13
Have serious doubts	33	26
Not religious at all	10	9
2. My favorite type of music is...		
Heavy Metal	6	5
Classic Rock	5	4
Alternative	7	13
Pop	33	26
Country	21	27
Classical	43	60
Blues	3	16
Other	4	1
3. What type of person are you?		
Wild and crazy, always the leader	6	6
Fun and outgoing, sometimes I am the leader	14	11
Easy going, follows with the crowd	19	6
Quiet, keep to myself	10	8
Everyone says I'm annoying	2	17

You receive this detailed report for every question on your questionnaire.

EMPLOYEE SUMMARY REPORT

Another great feature of Corporate IntellMatcher is the detailed participant answer summary report. This personalized summary, for each participant, shows all of the questions on the questionnaire and their answers. It also shows the percentage of compatibility per question with all of their matches. This allows them to see exactly what areas they are most compatible and what areas they are not. Take a look at the sample below.

Note: This information is provided for each of the 40 questions, for each of your four divisions and for each participant. The example on this page has been truncated (only shows 10 questions out of 40 and only a single division) to save space.

Welcome John P. Doe!

This page is a detailed representation of your compatibility with your matches on a question by question basis. Each section lists all of the questions on the questionnaire, the answer you chose and the percentage of compatibility you had with each of your participant matches for that specific question. For example, if you were to go down the left column to the 5th question, and over to the 3rd column, you would see the percentage of compatibility you and the participant that was your #1 match have in common. The 4th column shows your compatibility with the participant that was your #2 match, and so on. If the percentage is 100, then you both answered the same. If the percentage is zero, then you each chose completely opposite answers. The higher the percentage between zero and 100 shows that you both chose answers that were "closer" to each other.

Matches in your Office (BST)

Question	Your Answer	Office Match #1	Office Match #2	Office Match #3	Office Match #4	Office Match #5
1) My dream place to live would be...	A castle in Transylvania	75	100	25	100	50
2) My dream car would be a...	4x4 Truck	50	100	17	83	100
3) Do you play any musical instrument?...	No	50	50	100	75	25
4) How much time do you spend watching TV each day?...	I don't watch TV	100	75	50	50	50
5) My favorite music is...	Blues	100	14	100	100	57
6) When it comes to sleep...	I am a morning person	0	25	50	75	50
7) Do you read your horoscope?...	Never	67	67	67	100	67
8) My favorite sport to WATCH would be...	Football	0	100	100	0	0
9) My favorite sport to PLAY would be...	Swimming	0	0	0	0	0
10) When it comes to politics, I am...	Very interested	75	25	100	25	75

COMPANY SUMMARY

One of the greatest features of Corporate Intell-Matcher is the detailed summary reports that are sent to you. The information in this report is not only a great tool to determine how much participation you had in your event, but it gives you great tid-bits of information that you can include in your company or event newsletters.



OVERALL SUMMARY

Number of questions: 40

Total number of participants: 660

Total Male: 264

[Broken Down By Division]

Total Female: 238

[Broken Down By Division]

Most likely friend matches (in the entire firm) over 96%

John Doe (10) & Sally Thomas (10)

Steve Smith (12) & Sue Johnson (12)

Least likely friend matches (in the entire firm) under 4%

Ben Aston (9) & Sue Eastwood (11)

Cathy Benald (12) & Sam Richardson (9)

SUMMARY FOR ENTIRE FIRM

Oldest Male:	John Doe 08/18/93
Youngest Male:	Jim Smith 08/16/95
Oldest Female:	Jane Doe 08/17/93
Youngest Female:	Sally Smith 06/01/95
# Perfect 100% Matches:	1
# Perfect 0% Matches:	0
Average #1 Match:	63.55
Average Match:	30.09

This page left blank intentionally

INTELLMATCHER CORPORATE QUESTIONNAIRE

(Choose 40 Questions)

- 1.) **My favorite music is...**
Heavy Metal
Classic Rock
Alternative
Pop
Country
Classical
Blues
Other
- 2.) **How many brothers and sisters do you have?**
None and never wanted any
None but wished I did
1
2
3
4
5
6 or more
- 3.) **When it comes to religion, I...**
Love to participate regularly
Have to go because of my spouse
Believe, but rarely go
Have serious doubts
Not religious at all
- 4.) **My dream place to live would be...**
In a beach house
In a ski slope chalet
A cabin in the mountains
A big city highrise
A castle in Transylvania
- 5.) **My dream car would be a...**
4x4 Truck
SUV
4-door sedan
Sports car
Fuel-efficient car
Mini-Van
Conversion Van
- 6.) **Do you play any musical instrument?**
Yes
Yes, but I don't like it
Used to play but don't play any more
No, but want to learn
No
- 7.) **What type of person are you?**
Wild and crazy, always the leader
Fun and outgoing, sometimes I am the leader
Easy going, follows with the crowd
Quiet, keep to myself
Everyone says I'm annoying
- 8.) **Which color below do you like best?**
Blue
Green
Purple
Red
Black
Yellow
White
Grey
- 9.) **My favorite type of movie is...**
Horror
Drama
Romance
Comedy
Animated
Action
Science Fiction
Documentary
- 10.) **How much time do you spend watching TV each day?**
I don't watch TV
Less than an hour each day
A hour or two each day
3 or 4 hours each day
More than 4 hours each day
- 11.) **How much time do you spend using your HOME computer?**
I don't have a home computer
Less than an hour each day
A hour or two each day
3 or 4 hours each day
More than 4 hours each day
- 12.) **My favorite sport to WATCH would be...**
Hockey
Football
Baseball
Basketball
Tennis
Auto Racing
Swimming
Soccer
- 13.) **My favorite sport to PLAY would be...**
Hockey
Football
Baseball
Basketball
Tennis
Auto Racing
Swimming
Soccer
- 14.) **When it comes to politics, I am...**
Very interested
Moderately interested
A little Interested
Not interested unless it effects me
Not interested at all
- 15.) **What is your idea of great summer fun?**
Going to the beach
Hanging out with friends every day, anywhere
Staying home, playing video games and watching TV
Going away to a retreat
Furthering my education
Catching up on work
- 16.) **What is your idea of great winter fun?**
Going Skiing or Skating
Hanging out with friends every day, anywhere
Staying home, playing video games and watching TV
Going away to a retreat
Furthering my education
Catching up on work
- 17.) **What is your favorite TV channel?**
MTV
Sports
Movie Channels
Cartoons
Discovery
CNN
Financial
PBS
- 18.) **If you were given an extra \$10 in change at the checkout, you would...**
Go back to the same cashier later and see if they do it again
Keep it, and feel lucky
Keep it, but feel bad later
Start to leave, but then return to give it back
Give it back without question
- 19.) **What do you do with your HOME computer?**
Everything, I couldn't live without it
Games
Email and occasionally looking up stuff
Just email
I don't have a HOME computer or never use it
- 20.) **When it comes to sleep...**
I am a morning person
I get up when I need to without any issues
I like to take naps whenever possible
I am a night owl
I have destroyed many alarm clocks, I need LOTS of sleep!
- 21.) **When I have to get a gift for someone, I...**
Spend a lot of time picking out the perfect gift
Pick up the first thing that comes to mind
Get a gift certificate
Give them cash
I don't give gifts
- 22.) **When I am part of a group project, I usually...**
End up doing all of the work
End up doing more than my fair share of work
End up doing my fair share of work
Try to do as little as possible
Am a complete slacker letting everyone else carry my load

- 23.) **If someone cuts in front of you in line, you usually...**
 Physically remove them from the line.
 (Usually ends up in a fight)
 Give them a piece of your mind in a loud and obnoxious way
 Ask them politely to move
 Drop hints to the person behind you hoping they hear you and move
 Say nothing and let them stay there
- 24.) **When it comes to buying brand names or generics, I usually...**
 Only buy brand names. I wouldn't be caught dead with generics!
 Buy the generic if there is NO WAY anyone else could know
 Always buy brand names for certain items and generics for most others
 Depends on the price, brand names aren't that important
 Only buy generics
- 25.) **If you saw someone you know shoplifting, you would...**
 Report them unless they gave you a cut
 Ignore it and look the other way
 Go over and try to stop them
 Report them immediately
- 26.) **I get my news updates from...**
 The newspaper
 The television
 The radio
 The Internet
 Other people
- 27.) **My CD collection contains around...**
 None, I like 8-Tracks
 1-25 cd's
 26-50 cd's
 51-100 cd's
 I have a small radio station in my home
- 28.) **How do you get someone to notice you?**
 Be loud and obnoxious, dancing around.
 Walk right up and say hi
 Walk by them and smile
 Have someone introduce you to them
 I don't like to be noticed
- 29.) **Does it bother you when other people smoke around you?**
 Always
 Sometimes
 Never
- 30.) **How old are you in relation to your brothers and sisters?**
 I am an only child
 I am the youngest
 I am the middle child
 I am the oldest
- 31.) **Which working arrangement would you prefer?**
 Both the man and the woman should work full time
 The man should work full time and the woman should work part time
 The man should work full time and the woman should stay at home
 The woman should work full time and the man should work part time
 The woman should work full time and the man should stay at home
- 32.) **What would you do FIRST if you won the lottery?**
 Buy something really expensive for yourself
 Take a long trip somewhere
 Donate some to charity
 Invest some of it
 Give some of it to family & friends
- 33.) **What part of a newspaper do you read first?**
 Comics
 Sports
 Business
 Classified ads
 Local sections
 Front page story
 Other
- 34.) **Do you read your horoscope?**
 Every day
 Occasionally
 Never
 What is a horoscope?
- 35.) **Do people who use profanity bother you?**
 What kind of a stupid #% @&! question is that?
 No it does not bother me
 It bothers me only when it's every other word
 It depends on the person
 Yes, it bothers me all the time
- 36.) **If someone played a practical joke on you, you would...**
 Get back at them 10 times worse
 Get mad, but understand it was a joke
 Laugh
 Ignore it like it didn't happen
- 37.) **How many body piercings are acceptable to you?**
 You can never have enough
 Five
 Three
 One
 Even one is too many
- 38.) **I like my eggs...**
 Raw
 Scrambled
 Sunny-side up
 Over easy
 Boiled
 I don't eat eggs
- 39.) **Would you ever try an extreme sport like skydiving?**
 Already done that
 Yes
 Maybe
 No
- 40.) **What is your favorite season?**
 Winter
 Spring
 Summer
 Fall
- 41.) **How many books have you read in the past month?**
 Not one
 One
 Two
 Three
 Four
 Five
 More than five
- 42.) **What would be impossible to live without?**
 TV
 Radio/CD's
 Computer
 Video Games
 Food
- 43.) **How often do you laugh?**
 All the time
 Frequently
 Once in a while
 Never
 Only when I look in the mirror
- 44.) **Do you think you can have a "true friend" of the opposite sex?**
 Yes
 No
- 45.) **When you are under pressure, you...**
 Remain calm, and work it out.
 Are a little nervous, but work it out
 Are very nervous and distracted
 Freak out and panic
- 46.) **How much would it bother you to give a speech in front of the firm?**
 Would not bother me in the least
 Would bother me a little
 Would bother me quite a bit
 I don't think I'd be able to do it
- 47.) **Are your feelings easily hurt?**
 Yes
 Sometimes
 No
- 48.) **If you said something dumb in a meeting and everyone laughed, you would...**
 Want to crawl under the table in embarrassment
 Be a little embarrassed but deal with it
 Laugh with everyone else
 Get really mad
 Cry

- 49.) **Clothing and personal appearance is...**
Extremely important
Very important
Somewhat important
Not that important
Not important at all
- 50.) **Do you believe that fortune tellers are real?**
Yes
No
- 51.) **Your athletic abilities are...**
I live for it
Very good
Good
Poor
Very bad
- 52.) **Is eating healthy important to you?**
Yes
Somewhat
No
- 53.) **What type of drink do you prefer?**
Carbonated (soda)
Caffeine (tea, coffee)
Dairy (milk)
Fruit (juice)
Water
- 54.) **How often do you exercise?**
All the time
A few times a week
A few times a month
Almost never
Never
- 55.) **Going faster than the speed limit in a vehicle is...**
Expected
Alright as long as it is not too fast
Not acceptable
- 56.) **If someone says something that bothers you, you...**
Immediately get revenge
Let it bother you for days
Let it bother you for a little while
Nothing bothers me
- 57.) **When you get upset, you usually...**
Swear and throw things
Yell and scream
Grind your teeth but remain quiet
Sulk
Cry
- 58.) **Is donating to charity important to you?**
Yes, very important
Somewhat important
Not important
- 59.) **Do you believe in love at first sight?**
Yes
No
- 60.) **When you go to a sporting event, you...**
Yell and scream like a wild person
Occasionally raise your voice
Talk to everyone and basically ignore the game
I don't go to sporting events
- 61.) **Do you believe there is one perfect soulmate for everyone?**
Yes
No
- 62.) **How do you have the most fun?**
Large groups of people
Small groups of people
With a single friend
By myself
- 63.) **Do you think planning out your day is important?**
Yes, very important
Somewhat important
Not important at all
- 64.) **If you could go to another time period, it would be...**
The stone age
The wild west
The roaring 20's
The 50's
The future
Anything on or around BC
The 60's
- 65.) **What is your favorite ride at an amusement park?**
Extremem rides (freefall drops, rotors)
Roller coasters
Somewhat thrilling rides (spinning)
Water rides
Kiddy rides (teacups, merry-go-round)
I would never go to an amusement park
- 66.) **When putting something together, you...**
Read all of the directions first, then begin assembly
Get the instructions and start assembling right away
Only use the instructions if you need to
Only use the instructions to find out why you have parts left over
Never use instructions
- 67.) **Do you believe drunk drivers should be...**
Severely punished
Moderately punished
Not punished at all
- 68.) **Do you think the world is a better place now versus 100 years ago?**
Yes definitely
In some ways it is better
Not much better
Not at all
- 69.) **Do you save souvenirs from trips?**
Yes, every trip
Only some trips
Never
- 70.) **Watching women sports is...**
More fun than men's sports
Just as exciting as men's sports
Not as exciting as men's sports
Very boring
I don't watch sports at all
- 71.) **How lucky are you?**
Very lucky
Somewhat lucky
Not lucky at all
- 72.) **When it comes to eating meats, I...**
Can't get enough
I eat a normal amount
I watch what I eat carefully
I eat very little
I am a vegetarian
- 73.) **Do you believe that all things (good or bad) happen for a reason?**
Yes
Sometimes
No
- 74.) **Do you keep promises?**
All the time
Most of the time
Sometimes
Rarely
Never
- 75.) **Are you superstitious?**
Yes
Only about some things
No way
- 76.) **Do you believe that most people are honest?**
Yes
No
- 77.) **What wakes you up in the morning**
Alarm clock with music
Alarm clock with a loud buzzer
Alarm clock with a bell
Spouse
Kids
I get up on my own
A Rooster
- 78.) **Do you hold grudges?**
Always
Sometimes
Never
- 79.) **The best way to travel across the country (For Fun) would be...**
Airplane
Train
Bus
Car
Motorcycle
Bicycle
Jogging
- 80.) **How far back do you have memories?**
"Put me back in!"
1-4 years old
5-8 years old
9-12 years old
Teenage
Last week if I'm lucky!

81.) If someone offered you help on something you were having a problem with you:

- Gladly accept it and appreciate it
- Accept it but feel upset because you had to
- Reject the help politely, but still completely mess it up on your own
- Get mad at them for offering and offending your abilities

82.) Do you believe in UFO's

- Actually, I have been abducted or come from another planet
- Yes
- Yes, but I don't think they come to Earth
- No

83.) Do you believe in ghosts?

- Yes
- No

84.) How many bad habits do you have?

- None
- Only 1
- Two
- Three
- More than three

85.) If you found a spider in your house, you would.

- Kill it yourself immediately
- Find someone else to kill it
- Get something to bring it outside with
- Leave it alone

86.) I like to draw attention to myself...

- All the time
- Most of the time
- Sometimes
- Rarely
- Never

87.) My favorite time of day is...

- Morning
- Afternoon
- Evening
- Late night

88.) I think fireworks are...

- Very exciting
- Somewhat exciting
- Not that exciting
- Boring

89.) If you had to pick from one of the vehicles below, you would pick...

- The Batmobile
- A hearse
- A garbage truck
- A Buick
- I'd walk

90.) I would like to learn how to play...

- The drums
- The guitar
- The bass
- The piano
- The sax
- The Violin

91.) Does it bother you when people are late?

- Yes, all the time
- Sometimes
- Not very much because usually I am
- Never, I have all the time in the world

92.) How musical are you?

- Awsome, I play in a band
- Somewhat musical
- A little musical
- Only in the shower
- I have a hard time listening to the radio

93.) What comes first in your life?

- Family
- Friends
- Work
- Education
- Religion
- Other

94.) Would you ever eat a bug for \$100?

- Yes
- No

95.) When I have an appointment, I am...

- always early
- always on time
- sometimes late
- usually late
- always late

96.) Do you trust other people?

- Right away
- Usually after knowing them a little while
- Only after knowing them a long time
- Only if they are a blood relative, and then sometimes no
- I trust nobody

97.) Do you pay back money that you borrow?

- Always no matter who I borrowed it from
- I almost always do, sometimes I forget
- Only if it is not from my parents
- Rarely
- Never

98.) Did you ever cry at a sad movie (even at home)?

- Yes
- No

99.) What did you like best about elementary school?

- Can't remember
- Lunch
- Recess
- Show & Tell
- Learning

100.) If you had an extra hour each day, you would...

- Further your education
- Watch TV or play video games
- Spend it with family
- Spend it with friends
- Sleep
- Catch up on work

101.) Do you like swimming?

- Yes, I love it
- I only swim when I have to keep from drowning
- I can't swim

102.) How much jewelry do you wear?

- None
- A little
- More than most people
- Quite a bit
- I set off metal detectors miles away

103.) What type of candy do you prefer?

- Anything chocolate
- Anything sour
- Anything with nuts
- Anything chewey
- I don't eat candy

104.) What do you prefer to write with?

- Fancy Pen
- Generic Pen
- Manual Pencil
- Automatic Pencil
- Felt Tip Pen
- Crayons

105.) The best type of gift I like to receive is...

- Cash
- Gift certificates
- An actual gift

106.) Do you wear your seatbelt?

- Always
- Most of the time
- Sometimes
- Rarely
- Never

107.) Your boss screams your name over the PA system to come to his office, you...

- Freak out and wonder what you did
- Go to his office calmly, but be very nervous
- Go to his office calmly, but curious
- Wonder why it took so long
- Leave work

108.) Is the cup...

- Half full
- Half empty
- Twice as big as it needs to be

109.) If a tree falls in the forest and there is nobody there to hear it, does it make any noise?

- Yes
- No
- I don't understand the question

110.) When something is really funny, you...

- Laugh alot
- Laugh a little bit
- Quietly chuckle
- Just smile
- Nothing is funny to me

111.) TV Reality shows are...

- The best
- Sometimes they are good
- Most of the time they are bad
- Stupid
- I have never watched them

112.) When it comes to being organized, I am...

- The king of organization
- Very organized
- Somewhat organized
- Not that organized
- Darn, I lost my pencil again

This page left blank intentionally

Thank You

...for taking the time to review our information. If you have any other questions please feel free to contact us. We'll be more than happy to assist you.

We also understand that some of the time you invest may not be during normal business hours. Because of that, you may call us anytime, any day of the week. Although our normal business hours are 8:00 a.m. to 6:00 p.m. EST, we have the phones forwarded to our residence on evenings and weekends to assist you.

We hope to be hearing from you soon!

SNJ Enterprises
1801 South Parrott Ave #206E
Okeechobee, FL 34974
Family owned and operated

Contact information:

Phone: (863) 467-8967

Sales: sales@snjent.com

Support: support@snjent.com

Billing: billing@snjent.com

Webmaster: webmaster@snjent.com